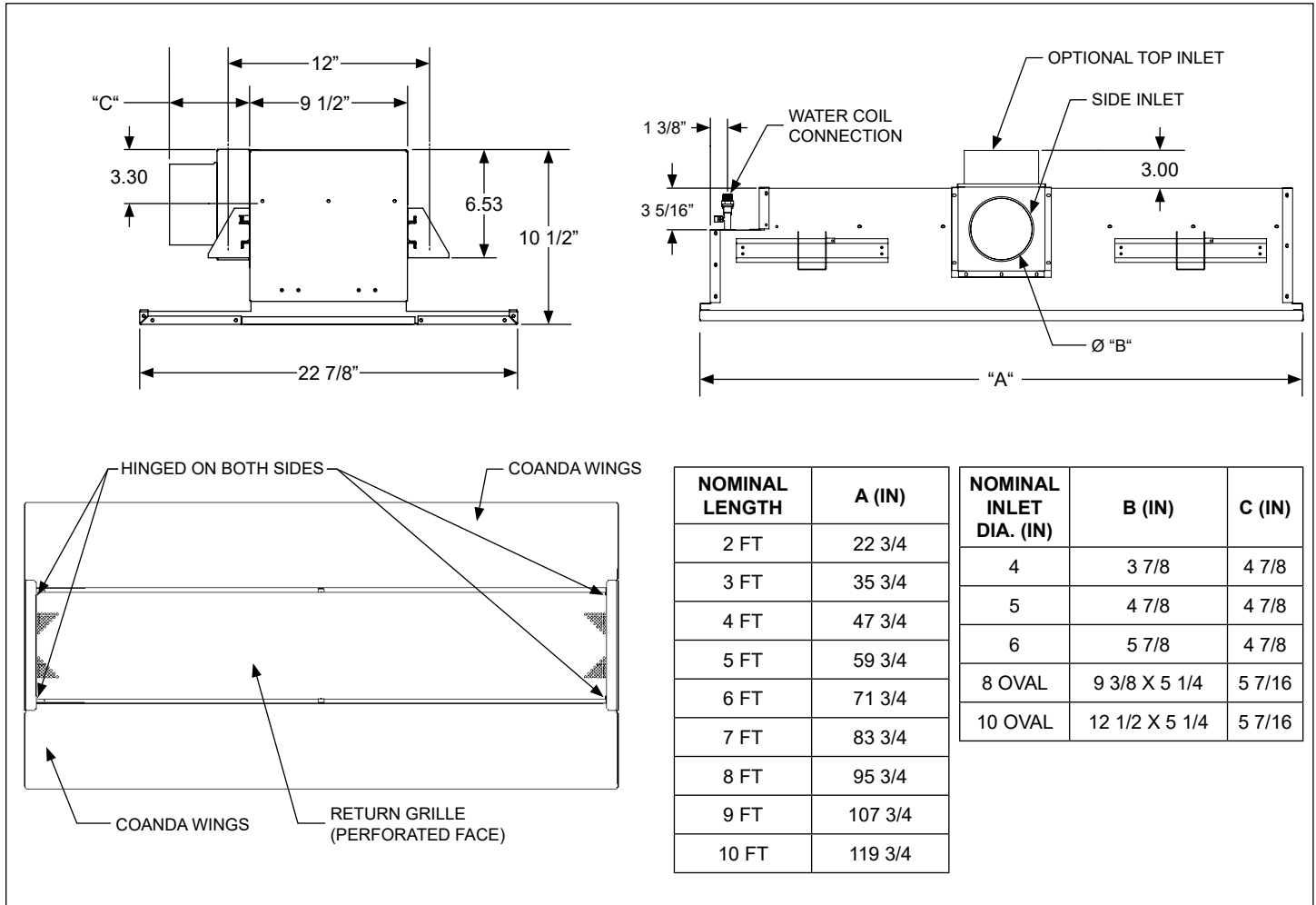


## CBE2-12 • Linear Exposed Mounted Chilled Beam • 1-Way & 2-Way Discharge • Vertical Coil

### Top Inlet Configurations



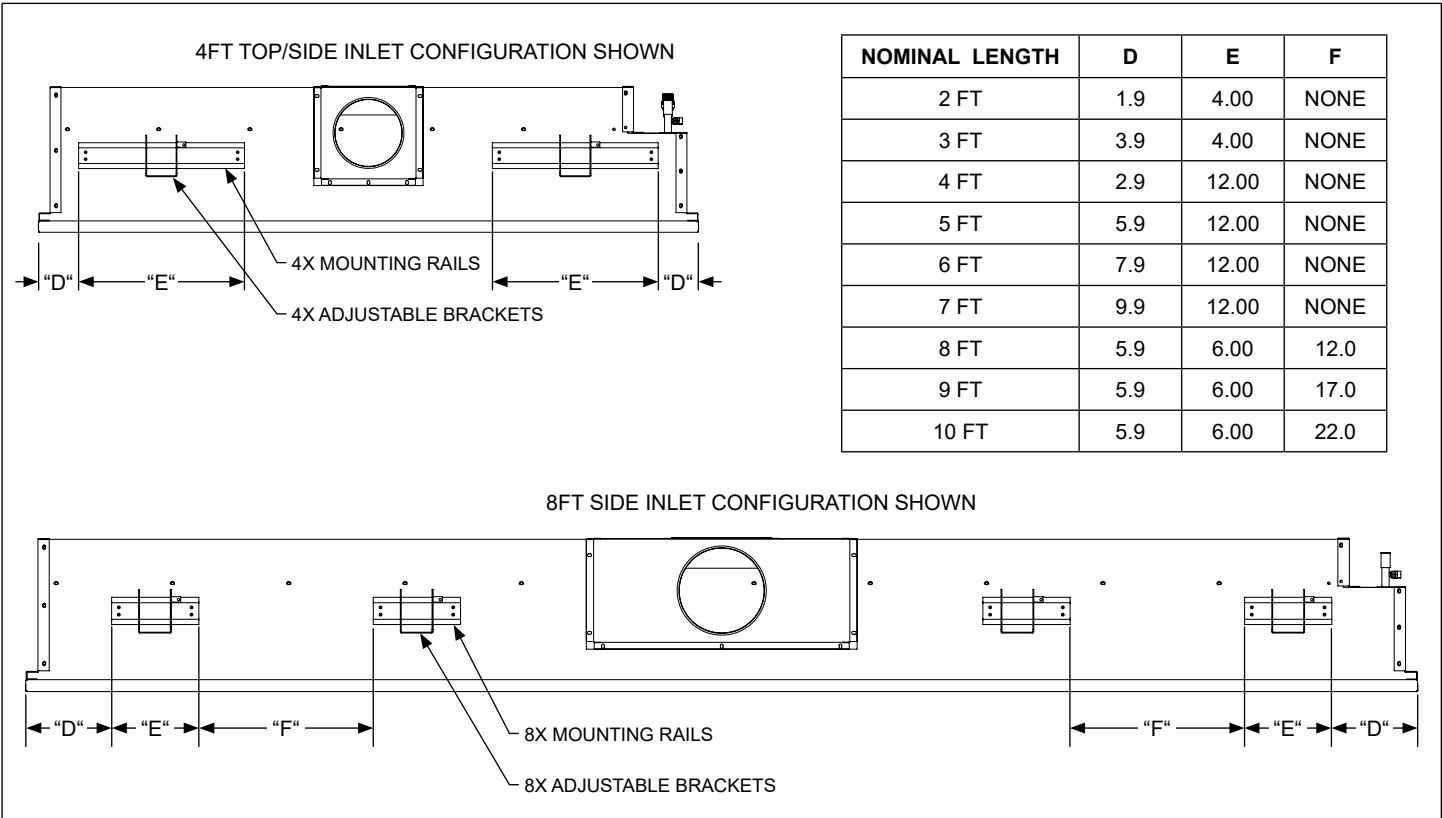
### General Description

- 12 inch wide, linear active chilled beam diffuser, available with 1-way or 2-way air distribution.
- Designed with integrated coanda plates for exposed installations.
- 2 to 10 feet chilled beam length in 1 foot increment.
- 2 pipe or 4 pipe coil configurations.
- Casing manufactured with galvanealed G90, 20 gauge sheet metal. Mechanically sealed, leak resistant construction.
- Coil standard with air vent, coil drain and 1/2" water connection, optional sweat or threaded connection.
- Rails with adjustable mounting brackets are provided, quantity varies per unit length.
- 4, 5, 6 or 8 inch oval and 10 inch oval inlet connection, located either on the side or top.
- Return face panel assembly is hinged, on both sides, allowing to swing open from either side or to be completely removed and provide easy access to internal components.
- Return face panel assembly available with round perforation or linear bar grille.
- Exterior face, border elements and visible internal components are painted in color of choice. Exposed plenum components painted black. Paint is powder coat, a mix of polyester and epoxy.

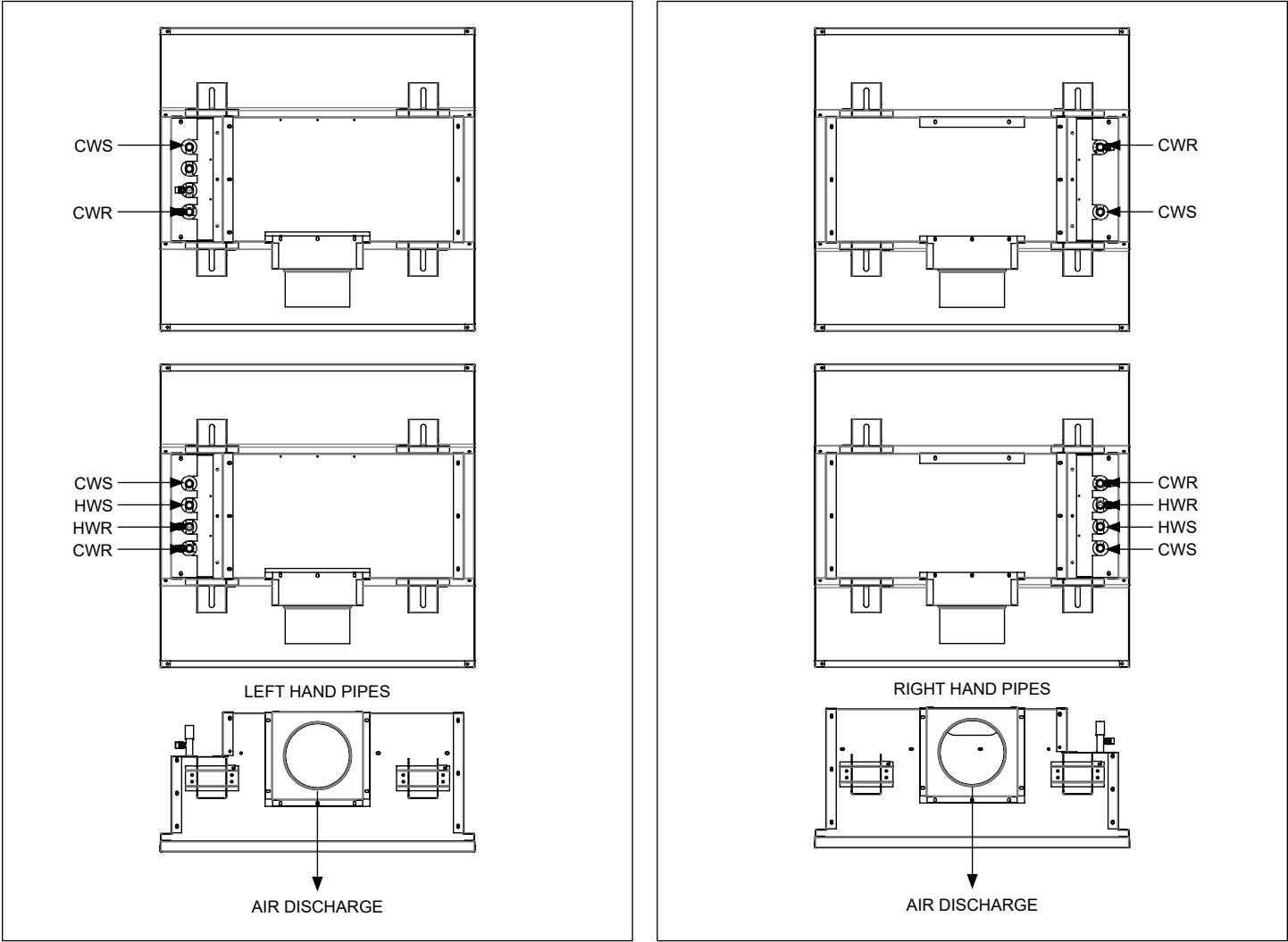
# Basic Unit Configuration

<b>Beam Width (nominal- in)</b> <input type="checkbox"/> 12	<b>Unit Length (nominal - ft)</b> <input type="checkbox"/> 2 <input type="checkbox"/> 3 <input type="checkbox"/> 4 <input type="checkbox"/> 5 <input type="checkbox"/> 6 <input type="checkbox"/> 7 <input type="checkbox"/> 8 <input type="checkbox"/> 9 <input type="checkbox"/> 10	<b>Throw Pattern</b> <input type="checkbox"/> F - 1 Way Towards Inlet <input type="checkbox"/> B - 1 Way Away From Inlet <input type="checkbox"/> 2 - Way	<b>Nozzle Configuration</b> <input type="checkbox"/> M13 <input type="checkbox"/> M17 <input type="checkbox"/> M20 <input type="checkbox"/> M23 <input type="checkbox"/> M27 <input type="checkbox"/> M31
<b>Primary Air Inlet Diameter Connection (inch)</b> <input type="checkbox"/> 4 <input type="checkbox"/> 5 <input type="checkbox"/> 6 <input type="checkbox"/> 8* <input type="checkbox"/> 10* <small>*Note: 8" and 10" are equivalent oval</small>	<b>Primary Air Inlet Orientation</b> <input type="checkbox"/> Side <input type="checkbox"/> Top	<b>Face Pattern</b> <input type="checkbox"/> Circular Perforation	<b>Accessories</b> <input type="checkbox"/> Lint Screen <input type="checkbox"/> Insulation
<b>Coil Type - Water Side Connection</b> <input type="checkbox"/> 2 Pipe - Left Hand <input type="checkbox"/> 2 Pipe - Right Hand <input type="checkbox"/> 4 Pipe - Left Hand <input type="checkbox"/> 4 Pipe - Right Hand	<b>Coil Connection -Type</b> <input type="checkbox"/> ½ in Sweat (SWT) <input type="checkbox"/> ½ in MNPT* (MPT) <input type="checkbox"/> ¾ in MNPT* (3PT) <small>*Note: MNPT required for CBHK hoses. CBHK hoses ordered separately.</small>	<b>Exposed Face Finish Color</b> <input type="checkbox"/> White (WHT) <input type="checkbox"/> Black (BLK)	

# Hanger Bracket Details

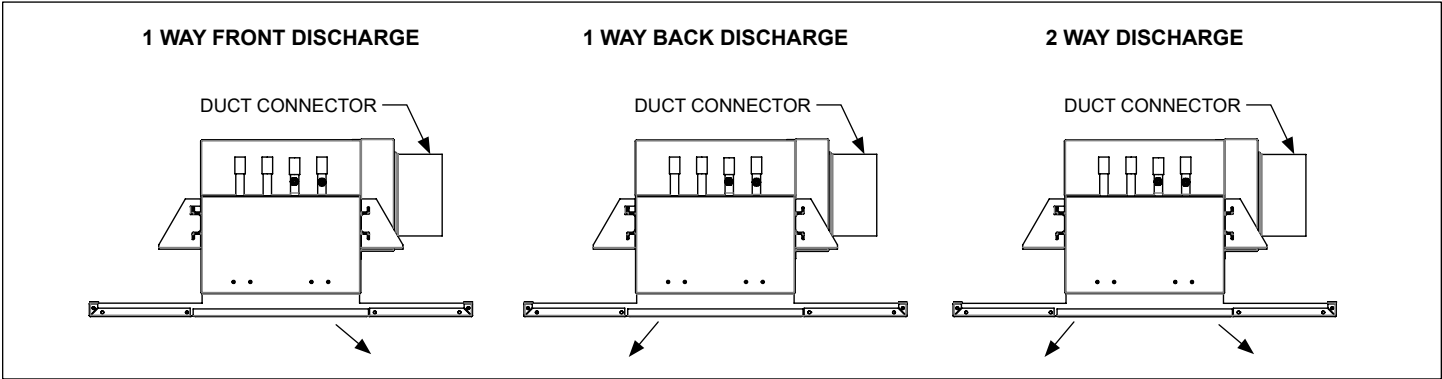


# Side Inlet, Discharge and Piping Configuration



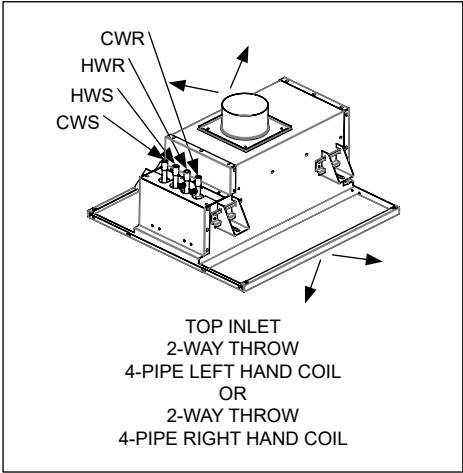
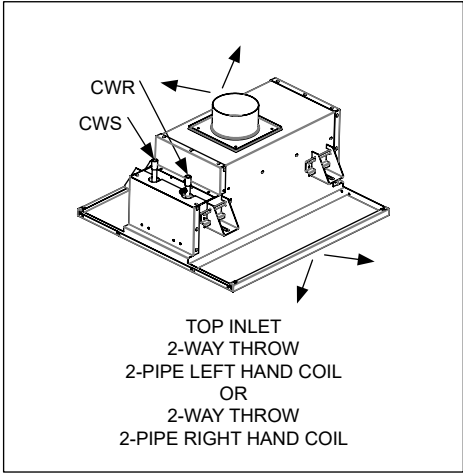
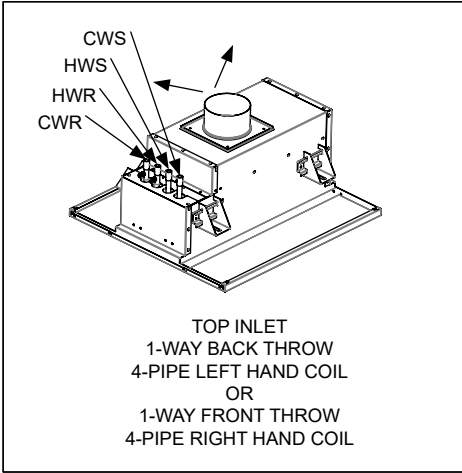
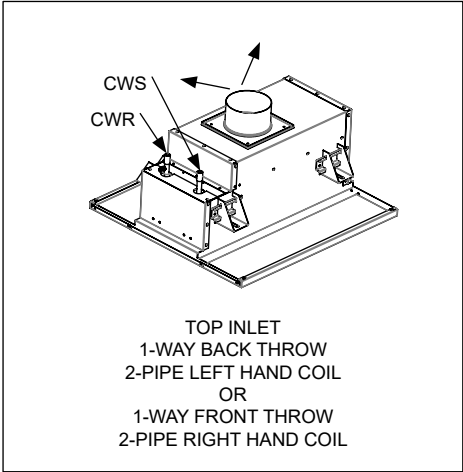
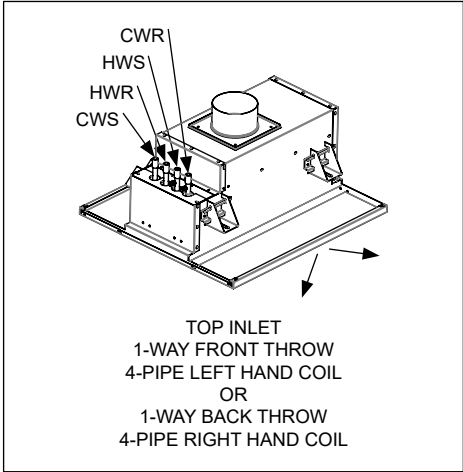
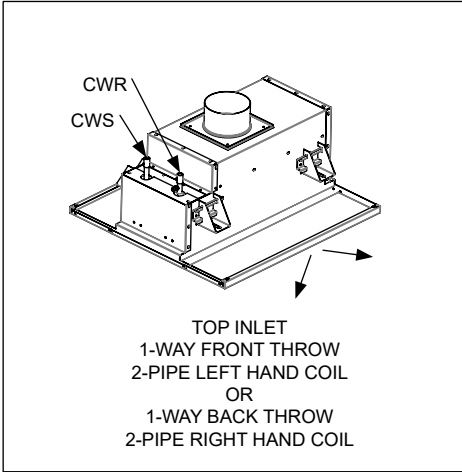
**LEFT HAND PIPES**

**RIGHT HAND PIPES**



**Note:**  
For back throw, the pipes CWS, HWS, HWR, and CWR are in opposite order from shown.

# Top Inlet, Discharge and Piping Configuration



**R - RETURN W - WATER S - SUPPLY**  
**HWR - HEATING WATER RETURN HWS - HEATING WATER SUPPLY**  
**CWR - COOLING WATER RETURN CWS - COOLING WATER SUPPLY**  
 \*HOT WATER CONNECTIONS ON 4-PIPE COIL ONLY